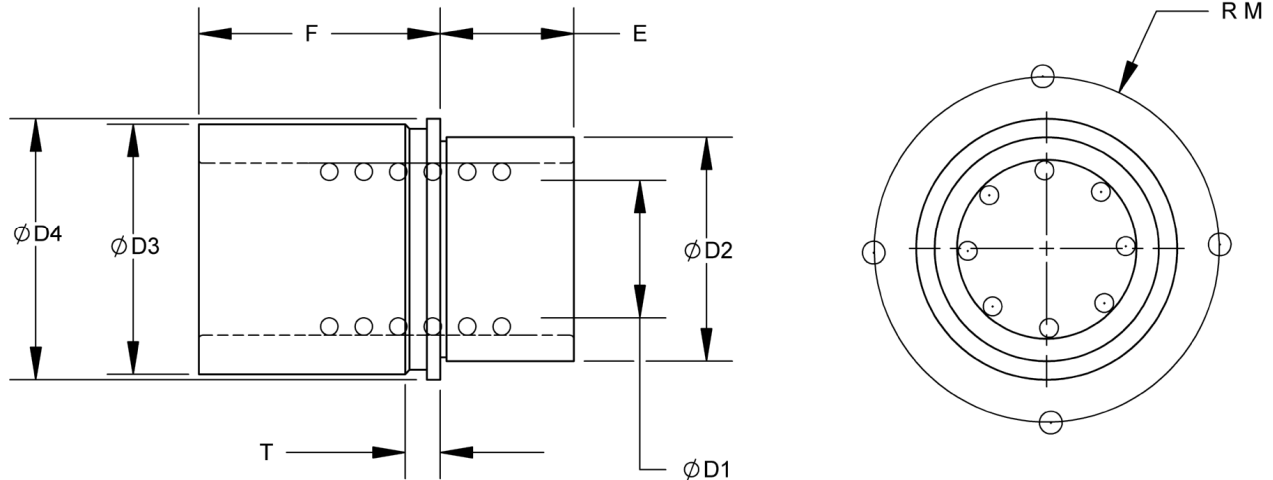


Case Hardened to 60 - 64 Rc



F	Diameter (D1)					
	25	32	40	50	63	80
35	B41.025.035					
50	B41.025.050	B41.032.050	B41.040.050			
65	B41.025.065	B41.032.065	B41.040.065	B41.050.065		
80		B41.032.080	B41.040.080	B41.050.080		
100			B41.040.100	B41.050.100	B41.063.100	B41.080.100
120				B41.050.120	B41.063.120	B41.080.120
140					B41.063.140	B41.080.140
<b>D2</b>	45	54	65	81	95	112
<b>D3</b>	49	58	70	88	103	120
<b>D4</b>	54	63	75	93	108	125
<b>E</b>	30			50		
<b>T</b>	15.1	18,1				
<b>M</b>	31	37	43	52	60	68
<b>CLAMPS</b>	B01.006.000		B01.008.000			
<b>SCREWS</b>	A05.006.016 (M6x16)		A05.008.020 (M8x20)			
<b>QTY</b>	3			4		